

GOVERNMENT OF INDIA  
MINISTRY OF ROAD TRANSPORT & HIGHWAYS

ORGANIZATIONAL HISTORY

1.1 CREATION OF THE DEPARTMENT:

The Department of War Transport was formed in July, 1942 by the bifurcation of the then Department of Communications into two Department viz., (i) the Department of Posts and (ii) the Department of War Transport.

1.2 FUNCTIONS ALLOCATED AND ORGANIZATIONAL HISTORY:

The functions allocated to the Department of War Transport included major ports, railway priorities, utilization of road & water transport, petrol rationing & producer gas, coastal shipping and the administration and development of major ports. Broadly speaking. The functions of the War Transport Department were to coordinate the demands for transport in war time. Later, the planning of exports was undertaken as a corollary to the Department's control of transport priorities.

1.3 SUBSEQUENT CHANGES

- i. In the year 1957, the Department of War Transport was re-named as Ministry of Transport & Communications and the Department of Transport was placed under it.
- ii. In the President's order of 25<sup>th</sup> January 1966, the Ministry of Transport was re-named as the Department of Transport, Shipping and Tourism in the Ministry of Transport and Aviation.
- iii. The Ministry of Transport and Aviation was bifurcated into the Ministry of Transport & Shipping and the Ministry of Tourism & Civil Aviation w e.f 13<sup>th</sup> March, 1967.
- iv. The Ministry of Transport & Shipping became the Department of Surface Transport under the Ministry of Transport w.e.f. 25<sup>th</sup> September, 1985.
- v. The Department of Surface Transport under the Ministry of Transport was re-named as the Ministry of Surface Transport w e.f 22<sup>nd</sup> October, 1986.
- vi. The Ministry of Surface Transport was bifurcated into two Ministries viz. Ministry of Shipping and Ministry of Road Transport & Highways w.e.f. 17<sup>th</sup> November, 2000.
- vii. The Ministry of Road Transport & Highways and Ministry of Shipping were merged on 2<sup>nd</sup> September, 2004 into a single Ministry of Shipping, Road Transport & Highways, with two Departments – Department of Shipping and Department of Road Transport & Highways.
- viii. The Ministry of Shipping, Road Transport & Highways was again bifurcated into two independent Ministries by converting the Department of Shipping and Department of Road Transport & Highways into separate independent Ministries viz Ministry of Shipping and Ministry of Road Transport & Highways in 2009.

#### 1.4 ALLOCATION OF BUSINESS:

This Ministry is responsible for development and maintenance of National Highways, administration of the Central Road Fund and formulation and implementation of policies relating to road transport. The subjects allocated to the Ministry of Road Transport & Highways, at present, as per the Govt. of India (Allocation of Business) Rules, 1961 framed and issued by Cabinet Secretariat, are as follows:-

##### I. THE FOLLOWING SUBJECTS WHICH FALL WITHIN LIST 1 OF THE SEVENTH SCHEDULE TO THE CONSTITUTION OF INDIA:

1. Compulsory insurance of motor vehicles.
2. Administration of the Road Transport Corporations Act, 1950 (64 of 1950).
3. Highways declared by or under law made by Parliament to be National Highways.
4. Issuance of notifications under clause (a) of section 3 and sections 3A, 3D, 7 and section 8A of the National Highways Act, 1956 (48 of 1956) without being scrutinised and vetted by the Legislative Department.

##### II. IN RESPECT OF THE UNION TERRITORIES:

5. Roads other than National Highways.
6. Administration of the Motor Vehicles Act, 1988 (59 of 1988) and taxation of motor vehicles.
7. Vehicles other than mechanically propelled vehicles.

##### III. OTHER SUBJECTS WHICH HAVE NOT BEEN INCLUDED UNDER THE PREVIOUS PARTS:

8. Central Road Fund.
9. Coordination and Research pertaining to Road Works.
10. Road works financed in whole or in part by the Central Government.
11. Motor vehicles legislation.
12. Promotion of Transport Co-operatives in the field of motor transport.
13. Formulation of the privatisation policy in the infrastructure areas of roads.

#### IV. AUTONOMOUS BOOIES.

14. National Highways Authority of India (NHAI).

#### V SOCIETIES/ASSOCIATIONS

15. Indian Academy of Highway Engineers (IAHE).

#### VI. PUBLIC SECTOR UNDERTAKINGS

16. National Highways and Infrastructure Development Corporation Ltd. (NHIDCL)

#### VII. ACTS:\*

17. The Road Transport Corporations Act, 1950 (64 of 1950).

18. The National Highway Act, 1956 (48 of 1956).

19. The Motor Vehicles Act, 1988 (59 of 1988).

20. The National Highways Authority of India Act, 1988 (68 of 1988).

\*In addition, the Ministry also administers the following three Acts which do not figure in AOB Rules:

- The Carriage By Road Act. 2007
- The Central Road Fund Act, 2000
- The Control of National Highways (Land & Traffic) Act, 2002

Note: The subjects given are as per the Allocation of Business Rules 1961, as in force on date. The Rules are currently under review by Cabinet Secretariat for modifications/amendments.

## 2.1 ORGANIZATIONAL SET UP

The organizational chart of the Department is at Annexure-I. The Ministry is divided into different Wings viz Road Transport Wing, Highways Wing, Administration Wing, International Cooperation Wing, Toll & Coordination Wing, Land Acquisition Wing, Parliament Wing, Finance Wing, Roads Wing and Transport Research Wing. The Wings are further divided into Divisions and Divisions further sub-divided into sections as brought out in Annexure II.

### 2.1.1 Road Transport Wing:

The Road Transport Wing is headed by a Joint Secretary (Transport) and is concerned with the formulation of policies relating to regulation of road transport, legislation relating to road transport including aspects of road safety, environmental issues, automotive norms besides making arrangements for movement of vehicular traffic with neighbouring countries. The Motor Vehicles Act, 1988 is the main enactment for regulating motor vehicles in the country.

### 2.1.2 Highways Wing

The Highways Wing is headed by Joint Secretary (Highways) and is concerned with Bharat Mala projects in so far as issues relating to PPPAC. CCI/CEA and Cabinet are concerned, all NHAI related issues handled in the Ministry, including projects assigned to NHAI requiring processing at Government level, State Support Agreements, Independent Highways, Highways Regulatory Commission, Setting up of Expressway Authority, Administrative matters of NHAI, Works of Expressways in the Country.

### 2.1.3 Administration Wing

The Administration Wing is headed by a Joint Secretary (Estt.) and handles the cadre management of the Central Engineering Services (Roads) Group 'A' and service matters in respect of other categories of posts is dealt with by this Wing. The various cadres are managed as per the instructions and guidelines issued by the Department of Personnel and Training, Ministry of Personnel.

Matter relating to Public Grievances and Pensions, Organisation and methods, information technology, right to information under RTI Act, 2005 etc are handled by Joint Secretary (T&C).

### 2.1.4 International Cooperation Wing

The International Cooperation Wing is under Joint Secretary (IC) and deals with international cooperation in roads, road transport and highways matters. The functions of the Wing include scrutinizing proposals and offers relating to bilateral cooperation and Memorandum of Understanding with various countries, Deliberations and developments in the Road Transport and Highways Sector on behalf of India at International Forums like South Asian Association for Regional Cooperation (SAARC), International Road Federation, International Transport Forum, World Economic Forum, etc, all matters pertaining to United Nations Organizations like

United Nations Economic Commission for Europe (UNECE), United Nations Economic and Social Commission for Asia and the Pacific (UNESCAP), United Nations Development Programme, World Trade Organization General Agreement on Trade in Services, World Bank, Asian Development Bank, processing for foreign visits of Minister (RT&H), MOS (RT&H), Secretary (RT&H) and Indian delegations led by them.

#### 2.1.5 Toll & Coordination Wing

This Wing is headed by Joint Secretary (T&C). The Wing handles formulation or amendment of User Fee [Toll policy/rules, Cabinet/EGoM/CCI notes]. Toll Notification matters in respect of National Highways, representations for exemption from user fee by individuals, organisations and State Governments, Processing User Fee issues/grievances raised by various Transport associations such as All India Motor Transport Congress, All India Confederation of Goods Vehicle Owners' Association etc, Implementation of Electronic Toll Collection System, Preparation of various reports/returns on user fee, Co-ordination with NHA/other Departments/State Govt. on Toll issues, Fee notifications/de-notification, Issuing of guidelines regarding notifications. Policy matters relating to Wayside Amenities and all general coordination matters including preparation of annual reports etc.

#### 2.1.6 Land Acquisition Wing

This Wing is headed by Joint Secretary (LA & Highways). The Wing handles land Acquisition matters, Environment/Forests/Wild Life Clearances in respect of National Highway Development Projects, National Highways Act and related matters, National Highways Tribunals, Monitoring & Review of National Highway Projects.

#### 2.1.7 Parliament Wing

This Wing is headed by Joint Secretary (T&C) and deals with all coordination work relating to Parliament and Parliamentary matters.

#### 2.1.8 Finance wing

The Finance Wing is headed by the Additional Secretary & Financial Adviser (AS&FA) and is common to both the Ministry of Road Transport & Highways and the Ministry of Shipping; and renders financial advice on various matters. It also assists in planning, budgeting, monitoring and evaluation of schemes/programmes.

#### 2.1.9 Roads Wing

The Roads Wing is headed by a Director General (Road Development), who is assisted by other technical and secretarial staff. The work of Roads Wing has been divided into various Project zones, headed by a Chief Engineer. The project zones look after the work of development and maintenance of National Highways and other centrally sponsored road works, Planning, Monitoring, Standards & Research, administration of Central Road Fund etc.

## 2.1.10 TRANSPORT RESEARCH WING

The Transport Research Wing (TRW) headed by Senior Adviser (Transport Research) is also common to both the Departments (the Department of Road Transport & Highways and the Department of Shipping). The TRW is responsible for collection, compilation and dissemination of statistics on road and water transport.

## 2.2.1 AUTONOMOUS BODIES/SOCIETIES/PUBLIC SECTOR UNDERTAKINGS

The following autonomous bodies/Societies/PSUs are under the administrative purview of this Department:

### 2.2.1.1 National Highways Authority of India (NHAI)

National Highways Authority of India (NHAI) was constituted by an Act of Parliament in 1988 under the administrative control of the Ministry of Road Transport and Highways. NHAI has been set up as a Central Authority to develop, maintain and manage the National Highways entrusted to it by the Government of India. The authority, however, became operational in February, 1995. The Authority consists of a full time Chairman, and not more than five full time Members and four part time Members who are appointed by the Central Government. The part time Members are the Secretary (RT&H), Secretary (Expenditure), Secretary (Planning) and DG (RD) & SS. NHAI has technical, Finance, Administrative and Vigilance Wings at its Headquarters. Project implementation Units (PIUs) headed by a Project Director and supported by various technical and accounts officers have been set up at various sites to oversee timely completion of the projects.

### 2.2.1.2 Indian Academy of Highway Engineers (IAHE)

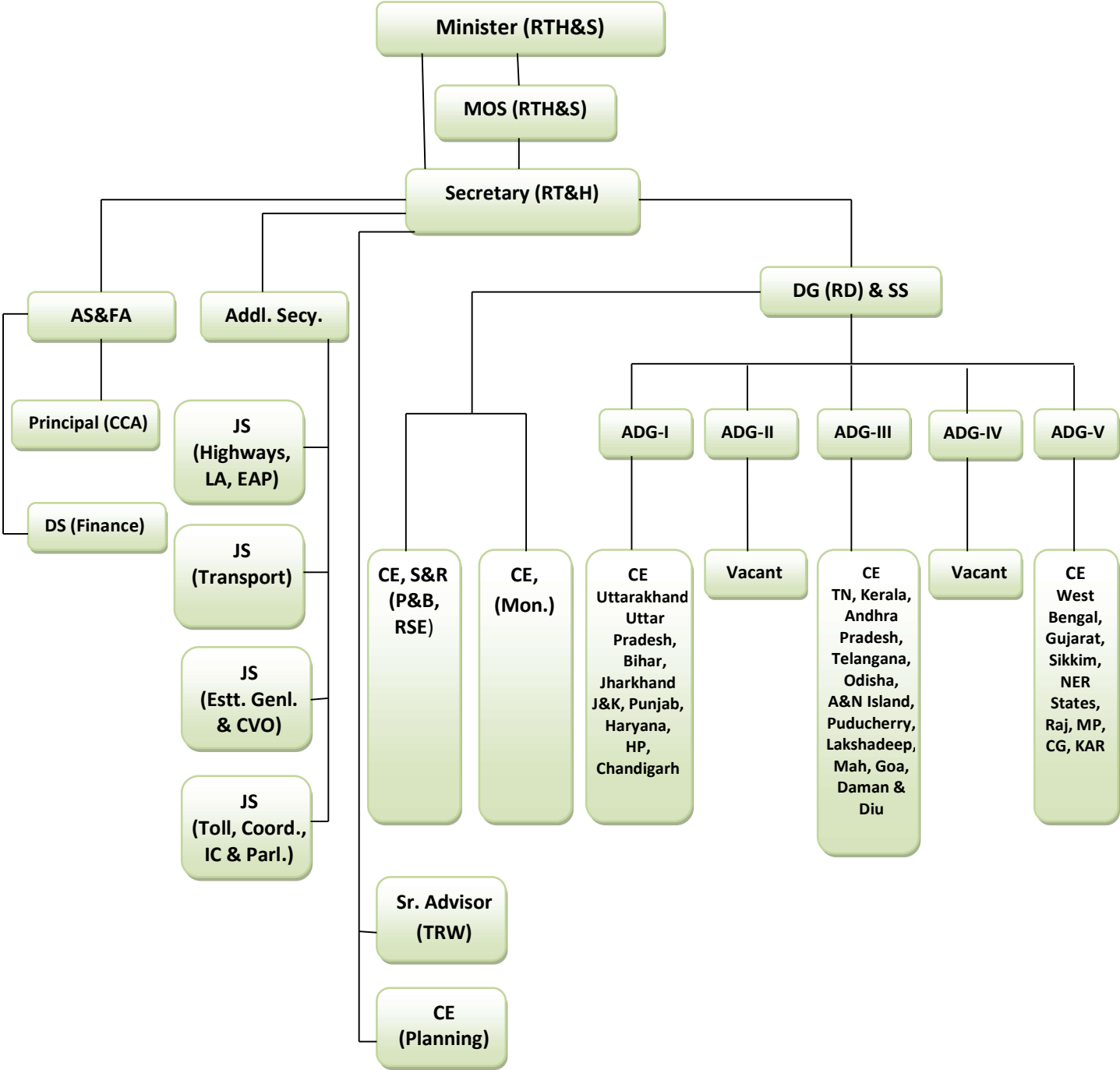
The Indian Academy of Highway Engineers (IAHE) (formerly known as NITHE) is a registered society under the administrative control of this Ministry. Hon'ble Minister-in-charge is the President and the Secretary, Road Transport & highways is the Vice-President of this society. The society is advised by a Governing Body comprising eminent and distinguished engineers and administrators. The Director General (Road Development) & Special Secretary of this Department is the Chairman of the Body. It was set up as a collaborative body of the Central and state Governments in 1983. This institute has been shifted in 2001 to its permanent campus at A-5, Institutional Area, Sector-62, Noida, (U.P.). The campus has all facilities for providing training and has a trainees' hostel and staff quarters. Training is imparted to freshly recruit as also to in-service highway engineers. The areas of training include different aspects of road and bridge engineering, contract management, quality control, etc.

### 2.2.1.3 National Highways and Infrastructure Development Corporation Ltd. (NHIDCL)

National Highways Connectivity Company Ltd. was set up under Companies Act, 2013. The name of the company was subsequently changed to National Highways and Infrastructure Development Corporation Ltd. and started functioning w.e.f. 18.07.2014. NHIDCL under the MORTH dedicated exclusively to the task of constructing/upgrading/widening of National Highways in parts of the country which shares international boundaries with neighbouring

countries in order to promote regional connectivity on a substantial basis. Secretary (RT&H) is the ex-officio Chairman of the company. The Board of Directors consists of one Managing Director, Additional Director General is the ex-officio Director (Tech.), one Director (Finance/Administration) and three independent part-time Directors to oversee timely completion of the projects.

**ORGANISATION CHART OF THE MINISTRY OF ROAD TRANSPORT AND HIGHWAYS**



Note:- The matters relating to Vigilance, Land Acquisition, International Cooperation and Parliament shall be submitted directly to Secretary (RT&H) by the concerned Joint Secretary.



**Wings/Divisions/sections**

Name of the wing (1)	Name of the Division (2)	Name of the Section (3)
A. Road Transport Wing	MVL Division	MVL Section
	Road Safety Division	Road Safety Section and DBT Cell
	Transport Division	Transport Section
B. Highways Wing	Highways Division	Highways & P&P Section
	Public Private Partnership Division	PPP Section
C. Administration Wing	Establishment Division	1. EI Section 2. EI(B) Section 3. EII Section 4. EII(B) Section (All matters other than those indicated against Audit Paras Division). 5. Special Reservation Cell
	General Administration Division	1. General Section 2. Welfare Section(including Canteen) 3. Library Section 4. CR Section 5. Cash Section 6. Hindi Section
	Vigilance Division	Vigilance Section
	Audit Paras Division	1. Budget Section(in respect of monitoring & follow up of Inspection Paras/Reports/Draft Audit Paras/PAC Paras/COPU matters). 2. E I(B) Section in respect of internal audit matters pertaining to Office in Principal CCA, MORT&H).
D. International Cooperation Wing	International Cooperation Division	International Cooperation Section
E. Toll & Coordination Wing	Toll Division	Toll Section
	Coordination Division	Coordination Section
	RTI Division	RTI Section
	O&M Division	O&M Section(including Grievances & Record Room)
	IT Division	IT Section

(1)	(2)	(3)
F. Land Acquisition Wing	Land Acquisition Division	P&M Section (in respect of subjects – Land Acquisition, Environment/Forest/Wild Life Clearances, national highways Act, National Highways Tribunals, Monitoring & Review of National Highway Projects)
G. Parliament Wing	Parliament Division	Parliament Section (All Parliamentary Coordination matters and Monitoring & Review of VIP References).
H. Finance Wing	Budget Division	Budget Section (All matters indicated against this Section other than those indicated against this Section in respect of Administration Wing-Audit Paras)
	Finance Division	TF II Section
I. Roads Wing ** <u>Zones</u> Zone-1, Zone-2, Zone-3, Zone-4, Zone-5, EAP Zone, LWE Affected Areas Zone, Planning Zone, Monitoring Zone, S&R (Pavement & Bridges), Mechanical Zone, Works & Accounts.	**	<ol style="list-style-type: none"> <li>1. Zone-1 Section</li> <li>2. Zone-2 Section</li> <li>3. Zone-3 Section</li> <li>4. Zone-4 Section</li> <li>5. Zone-5 Section</li> <li>6. EAP – (PIC, world Bank Projects)</li> <li>7. LWE affected areas</li> <li>8. Planning &amp; Monitoring Section (All matters indicated against this Section other than those indicated against this Section in respect of Land Acquisition Wing).</li> <li>9. S&amp;R (Pavement &amp; Bridges)</li> <li>10. Mechanical</li> <li>11. Works &amp; Accounts Section.</li> </ol>
J. Transport Research Wing	Transport Research Division	Transport Research Unit. (fully manned by Technical Officers from ISS/IES stream.

\*\* Roads Wing is divided into different Zones headed by CEs reporting to ADGs/DG(RD&SS). CEs are assisted by Superintending Engineers and Executive Engineers/Assistant Executive Engineers/Technical Officers – Secretarial Assistance is given by the Sections attached to the Zones as indicated in Col 3.